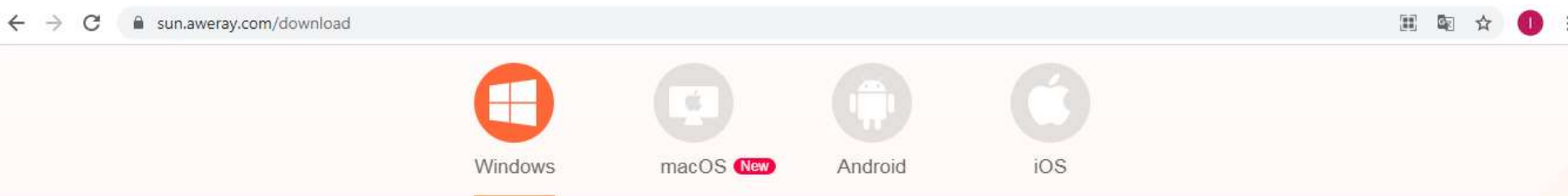


1. Открыть сайт  <https://sun.aweray.com/download>

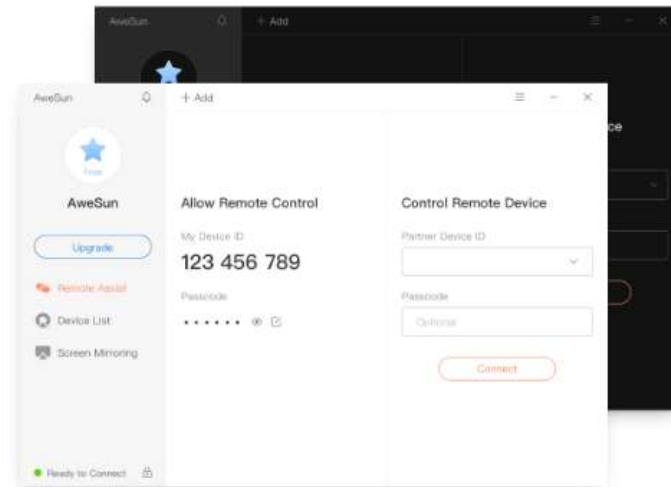


## 2. Get AweSun for Windows

- Support remotely controlling, managing account, and being controlled.
- Enable instant support for your clients, colleagues, friends and family.
- Achieve online teamwork easily.



1.6.0.34643





Windows



macOS **New**



Android



iOS

**3** Нажать на AweSun\_1.6.0.346....exe

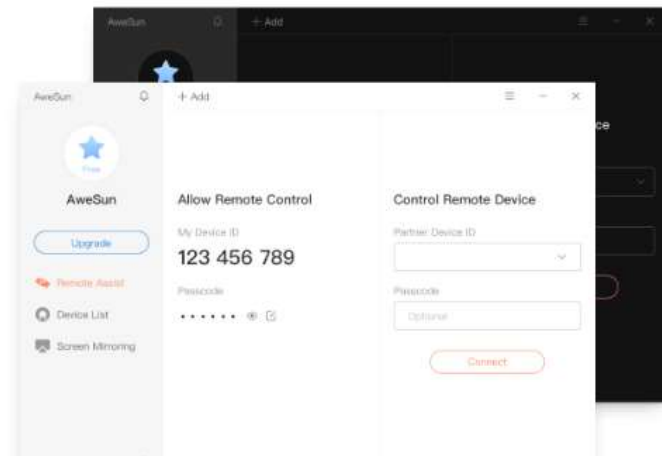
## Get AweSun for Windows

- Support remotely controlling, managing account, and being controlled.
- Enable instant support for your clients, colleagues, friends and family.
- Achieve online teamwork easily.

Download

1.6.0.346

AweSun\_1.6.0.346....exe  
7,1/7,1 MB



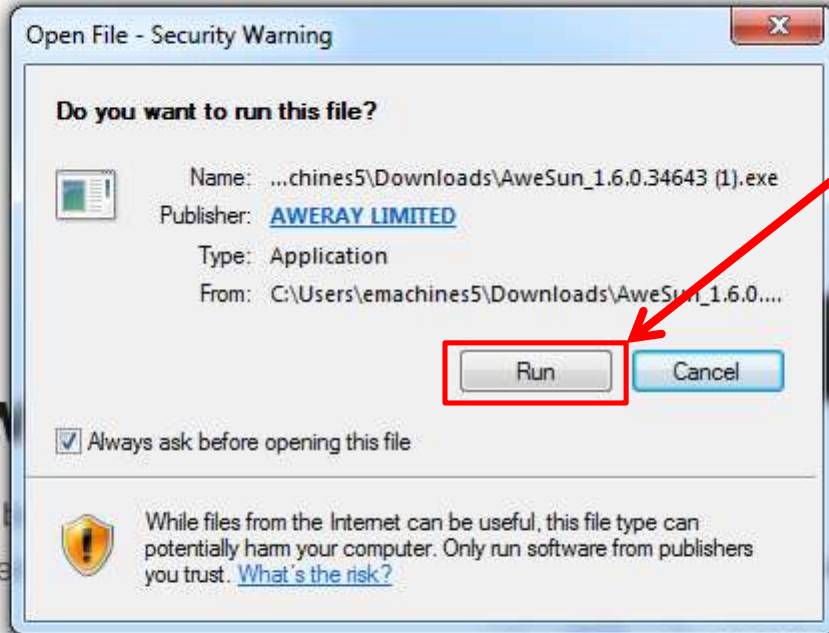
Показать все

Windows

macOS **New**

Android

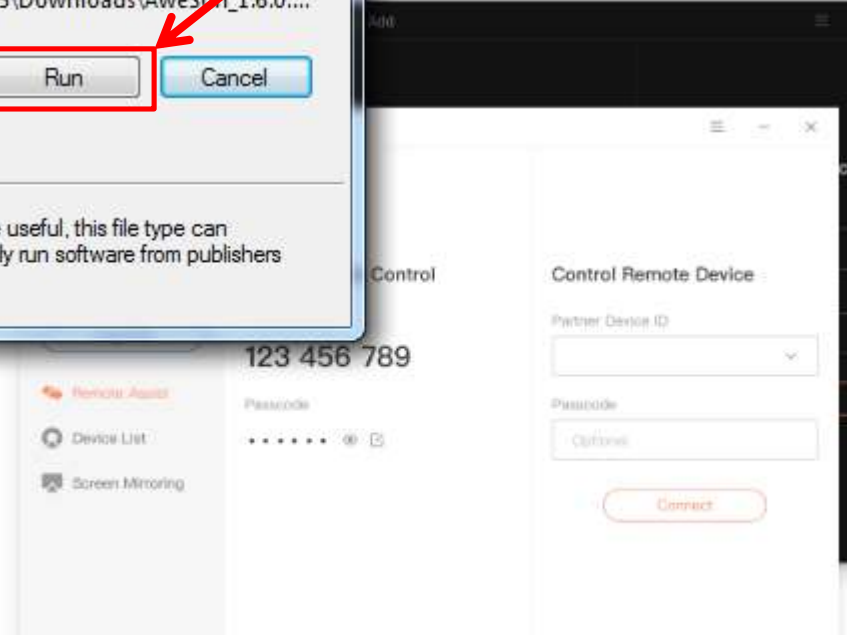
iOS



4.

## AweSun for Windows

controlling, managing account, and  
support for your clients, colleagues, friends  
network easily.





5.

Install Now

Run Only

Destination Dir: C:\Program Files (x86)\Aweray\Awe [Browse](#)

# 6. Введите код, который будет выдан.

The screenshot shows the AweSun application interface. On the left is a sidebar with a user profile icon, the text "Hello", a "Log In / Sign Up" button, and menu items for "Remote Assist", "Device List", and "Screen Mirroring". The main area is divided into two panels. The left panel, titled "Allow Remote Control", displays "My Device ID" as "035 744 736" with a copy icon, a "Passcode" field with seven dots, and a note: "Select 'Passcode Refresh: After remote control' in [Options](#) for better device security". The right panel, titled "Control Remote Device", features a "Partner Device ID" label, a red-bordered input field with a vertical line and a dropdown arrow, a "Passcode" field with the text "Optional", and a "Connect" button. A red arrow originates from the top instruction and points to the "Partner Device ID" input field.