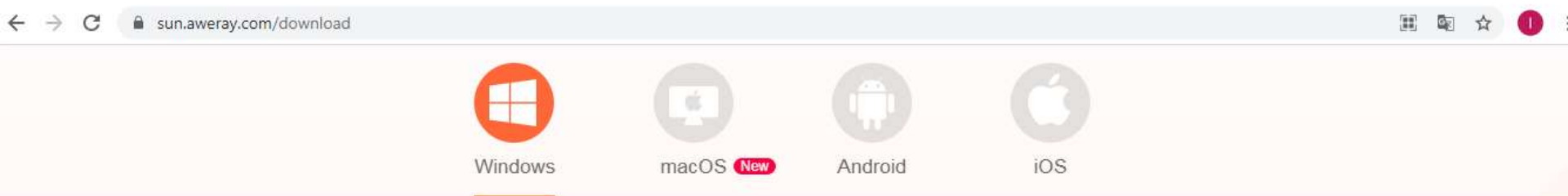


1. Atvērt vietni <https://sun.aweray.com/download>

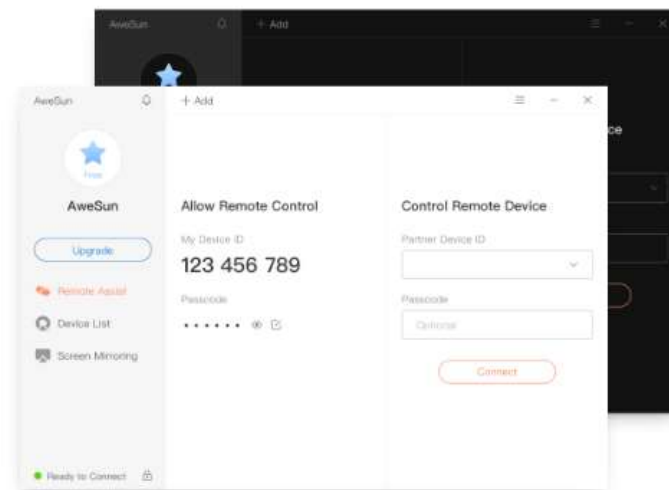


Get AweSun for Windows

- Support remotely controlling, managing account, and being controlled.
- Enable instant support for your clients, colleagues, friends and family.
- Achieve online teamwork easily.

 Download

1.6.0.34643





Windows



macOS **New**



Android



iOS

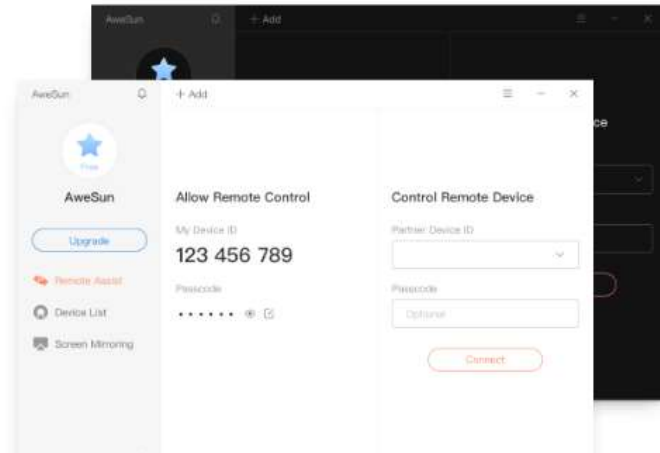
3. Uzpiest uz AweSun_1.6.0.346....exe

Get AweSun for Windows

- Support remotely controlling, managing account, and being controlled.
- Enable instant support for your clients, colleagues, friends and family.
- Achieve online teamwork easily.

Download

1.6.0.34643



AweSun_1.6.0.346....exe
7,1/7,1 MB

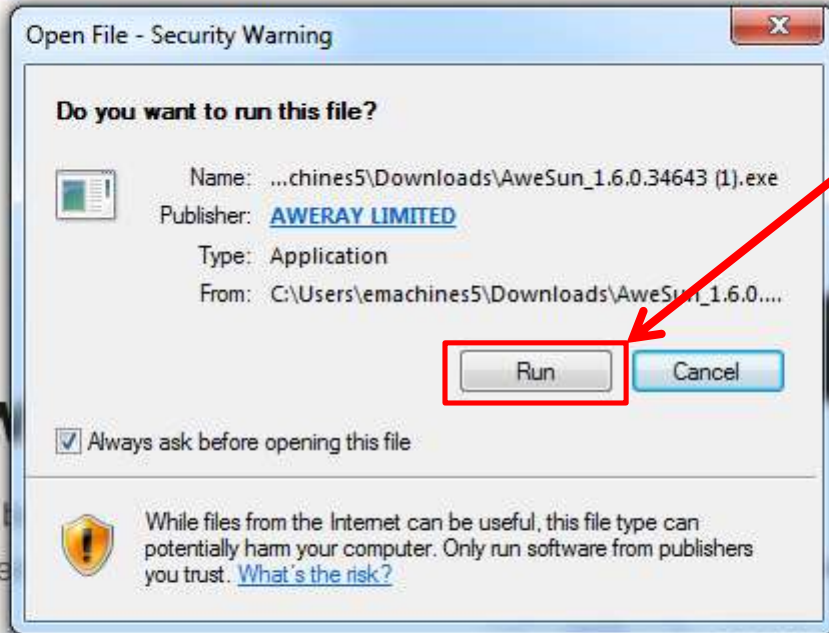
Показать все

Windows

macOS **New**

Android

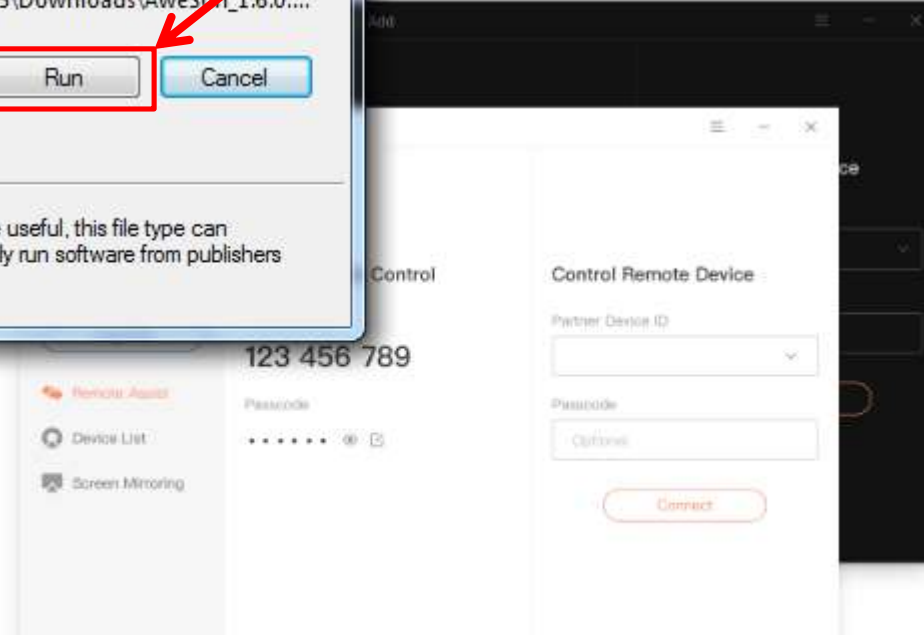
iOS



4.

AweSun for Windows

controlling, managing account, and
support for your clients, colleagues, friends
network easily.





5.

Install Now

Run Only

Destination Dir: C:\Program Files (x86)\Aweray\Awe [Browse](#)

6. Ievadīt kodu kas tiks izdots.

The screenshot displays the AweSun application interface. On the left is a dark sidebar with a user profile icon, the text 'Hello', a 'Log In / Sign Up' button, and menu items for 'Remote Assist', 'Device List', and 'Screen Mirroring'. The main area is divided into two panels. The left panel, titled 'Allow Remote Control', shows 'My Device ID' as '035 744 736' and a 'Passcode' field with seven dots. The right panel, titled 'Control Remote Device', features a 'Partner Device ID' input field (highlighted with a red box and a red arrow from the title above), a 'Passcode' field with the placeholder text 'Optional', and a 'Connect' button at the bottom.